



BETTINARDI®

2026

TABLE OF CONTENTS

| | |
|-----------------------|----|
| FOUNDER'S NOTE..... | 1 |
| TOUR AMBASSADORS..... | 2 |
| ANTIDOTE SERIES..... | 4 |
| BB SERIES | 14 |
| QUEEN B SERIES | 24 |
| WEDGES..... | 35 |
| IRONS | 39 |



FOUNDER'S NOTE

At Bettinardi Golf, every product reflects a commitment to heritage, precision craftsmanship, and continuous innovation. Since 1998, the company has been shaped by the shared vision of Robert J. Bettinardi and Sam R. Bettinardi guided by a pursuit of excellence and a strong belief in American made quality.

Looking ahead to 2026, we're proud to introduce exciting new additions to the Bettinardi lineup. An expansion of the Antidote Series and a reimagined BB Series debut this season, uniting with our Queen B, wedges, and irons to define Bettinardi's next generation of performance-driven equipment. These latest lines are designed to inspire the next generation of golfers and further solidify Bettinardi's legacy of precision craftsmanship and uncompromising performance.

We want to thank our partners and customers around the world who have continued to support us and have been foundational in Bettinardi's continued growth and brand success.


Robert J. Bettinardi


Sam Bettinardi

100

PROFESSIONAL WINS AND COUNTING







ANTIDOTE SERIES

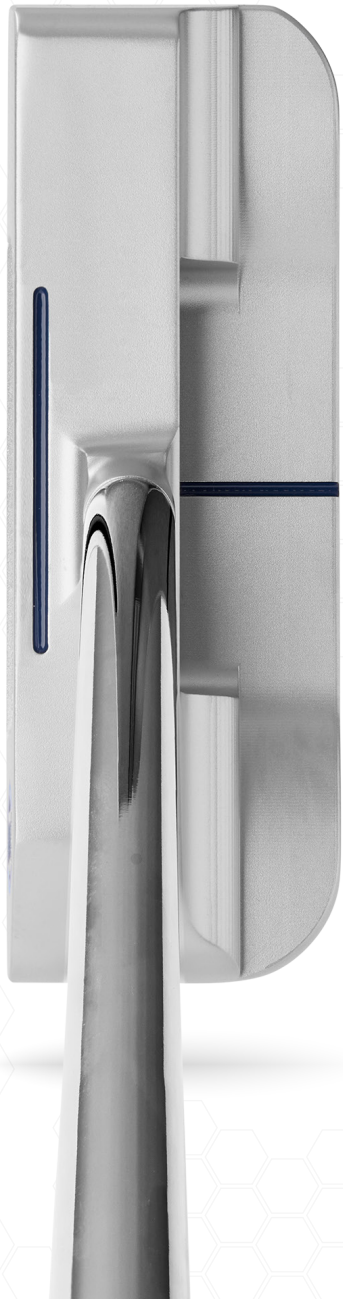
PUTTING SIMPLIFIED

The Bettinardi Antidote putter series is a masterpiece of precision and innovation. Engineered with Simply Balanced™ Technology, it ensures a torque-free stroke, offering unrivaled consistency on the greens. Crafted with Bettinardi's iconic design and legendary feel, the Antidote putter embodies the perfect fusion of elegance, control, and performance. Elevate your game to the highest standard of excellence and experience putting redefined. Simplify your stroke with the Antidote.

ANTIDOTE SERIES

SB 1

F.I.T. FACE™



ANTIDOTE SERIES

SB 1

COUNTERBALANCE

F.I.T. FACE™



ANTIDOTE SERIES
SB2

F.I.T. FACE™



ANTIDOTE SERIES

SB2

COUNTERBALANCE

F.I.T. FACE™

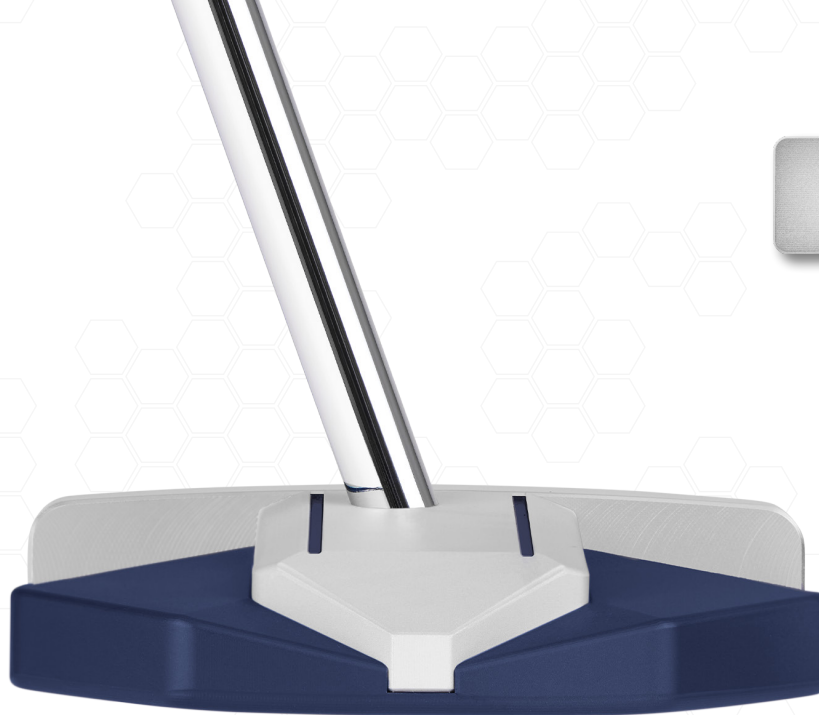


ANTIDOTE SERIES

SB2

LONG

F.I.T. FACE™



ANTIDOTE SERIES
SB3

F.I.T. FACE™



ANTIDOTE SERIES
SB5

F.I.T. FACE™



SIMPLY BALANCED™ TECHNOLOGY

The Simply Balanced™ Technology promotes a zero-torque stroke, allowing the putter face to stay naturally on path and square from start to finish for ultimate control and consistency, regardless of swing path.

F.I.T. FACE™ (FEEL IMPACT TECHNOLOGY) FACE MILLING

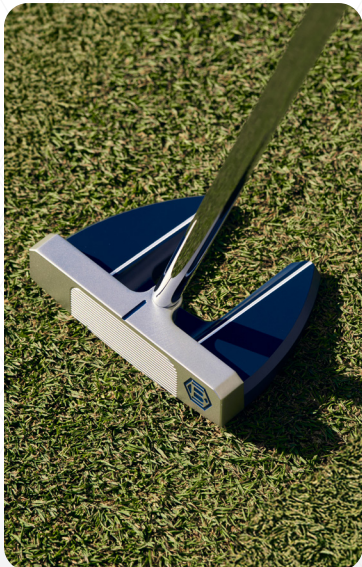
Milled from 303 Stainless Steel. This exclusive Bettinardi face milling removes 55% of the face material, resulting in a soft, responsive feel.

DIAMOND BLAST AND SAPPHIRE BLUE FINISH

The Antidote Series showcases Diamond Blast and Sapphire Blue finishes, delivering a refined look with premium durability.

PREMIUM COMPONENTS

This Antidote Series putter comes paired with a Chrome Tour Grade shaft, custom matching Lamkin or Winn Grip, and Antidote Series magnetic headcover.



STANDARD GRIP



JUMBO GRIP



17" GRIP



SPLIT GRIP



| MODEL | SB1 | SB1 CB | SB2 | SB2 CB | SB2 LONG | SB3 | SB5 |
|-------------------|-------------------------------------------------------|-----------|-----------------------------------------------------------------------------|-----------|------------------------------------------------------------|-------------------------------------------------|-------------------------------------------------|
| NECK | CTR | | | | | | |
| DEXTERITY | RH | | RH / LH | | RH | RH / LH | RH |
| LENGTHS AVAILABLE | 33" - 38" | 36" - 40" | 33" - 38" | 36" - 40" | 40" - 50" | 33" - 38" | |
| FINISH | FACE: DIAMOND BLAST / POCKET INSERT: SAPPHIRE BLUE | | FACE: DIAMOND BLAST / BODY: SAPPHIRE BLUE / CENTER INSERT: DIAMOND BLAST | | | FACE: DIAMOND BLAST / BODY: SAPPHIRE BLUE | FACE: DIAMOND BLAST / BODY: DIAMOND BLAST |
| LOFT | 3° | | | | | | |
| LIE | 70° | | | | 79° | 70° | |
| OFFSET | -1° | | | | | | |
| FACE MILLING | F.I.T. (FEEL IMPACT TECHNOLOGY) FACE | | | | | | |
| ALIGNMENT | T - LINE | | TOPLINE / DOUBLE FLANGE | | | | |
| MATERIAL | BODY: 303 SS / POCKET INSERT: 6061 AL | | FACE: 303 SS / BODY: 6061 AL / CENTER INSERT: 6061 AL | | FACE: 303 SS / BODY: 6061 AL / CENTER INSERT: 303 SS | FACE: 303 SS / BODY: 303 SS | |
| WEIGHT | 360g | 400g | 360g | 400g | 500g | 360g | |
| TOE HANG | -90° | | | | | | |
| HEADCOVER | BLADE | | CENTER SHAFTED MALLET | | | | WIDE BLADE |



BLADE
HEADCOVER



CENTER SHAFTED Mallet
HEADCOVER



WIDE BLADE
HEADCOVER



BB SERIES

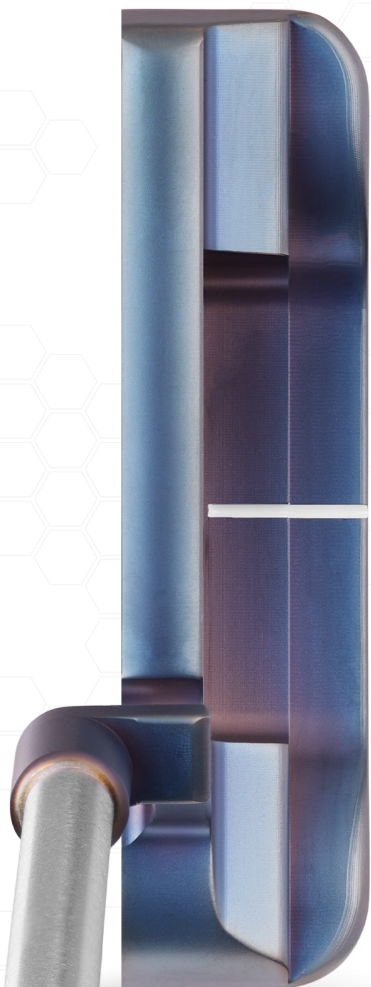
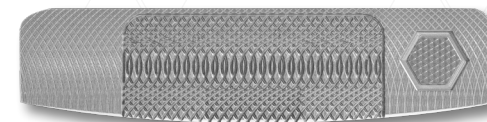
TRADITION REDEFINED THROUGH INNOVATION

Rooted in American-made craftsmanship and driven by relentless innovation, Robert J. Bettinardi elevates his traditional Tour-validated headshapes with the completely reengineered BB Series. Finished in a bold Savannah Blue PVD, this lineup combines a striking aesthetic with the pure feel of a one piece milled putter—no inserts, just precision. At its core is the advanced VDF (Variable Depth Flymill) face milling, featuring nine precision-milled zones that optimize energy transfer for consistent ball speed and spin across the face, no matter where it's struck.

BB SERIES

BB-1

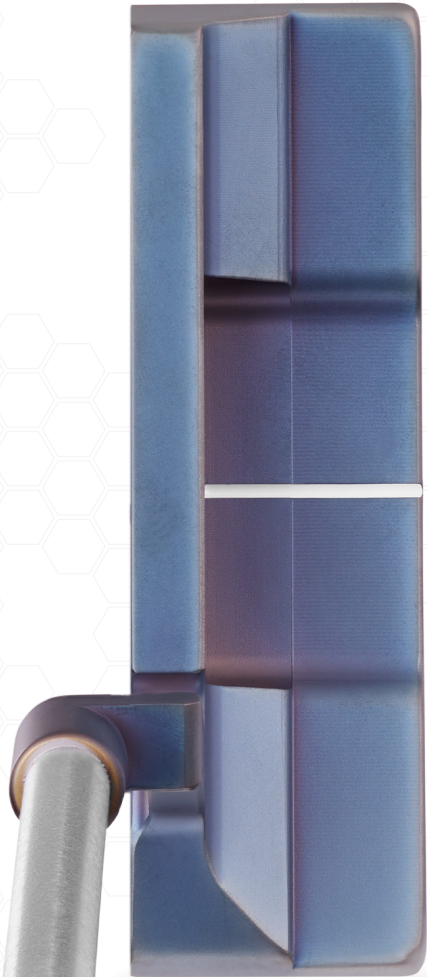
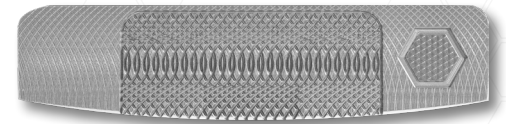
VDF FACEMILLING



BB SERIES

BB-8W

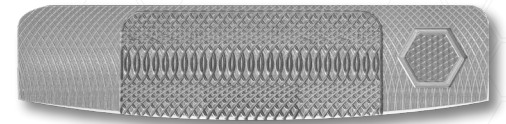
VDF FACEMILLING



BB SERIES

BB-28

VDF FACEMILLING

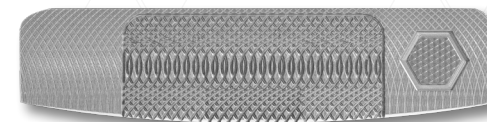


BB SERIES

BB-28

ARMLOCK

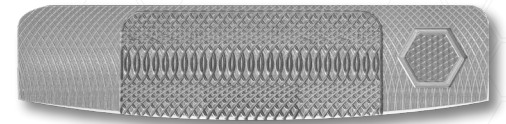
VDF FACEMILLING



BB SERIES

BB-49

VDF FACEMILLING



BB-49

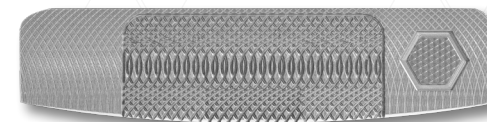
BETTINARDI
MILLED IN THE USA
355G

BB SERIES

BB 6.0

SPUD

VDF FACEMILLING

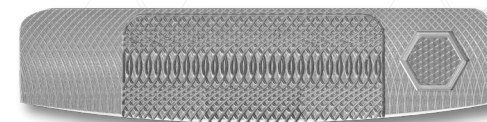


BB SERIES

BB 7.0

SPUD

VDF FACEMILLING



VDF (VARIABLE DEPTH FLYMILL) FACE MILLING

Engineered for consistency. Our all-new VDF (Variable Depth Flymill) Face Milling features nine individually tuned zones across the face, meaning deeper grooves where you need more control, shallower where you need more energy. Resulting in more consistent distance and feel, even on off-center strikes. Because every putt matters, and not every strike is perfect.

TOUR-PROVEN PERFORMANCE

Crafted with input from the world's best. The BB Series is trusted by Tour professionals and built to thrive under pressure from major championships to weekly Tour events. Every detail is shaped by real world performance to deliver the exceptional feel, control, and reliability demanded at the highest level.

MODERN CLASSICS

Timeless shapes, elevated. Each BB Series model is a nod to traditional design, refined with modern performance in mind. Milled from one piece 303 Stainless Steel, these putters feature clean sightlines, softened edges, and ideal proportions built to inspire confidence at address and deliver unmatched feedback on the green.

SAVANNAH BLUE PVD FINISH & TOUR COMPONENTS

Precision meets polish. Each BB Series putter is finished in a deep Savannah Blue PVD for durability and unmistakable style. Paired with a Tour grade Brushed Nickel shaft for enhanced feel and control and protected by a carbon fiber inspired magnetic headcover with navy and grey detailing, every detail reflects Bettinardi's commitment to performance and craftsmanship.



STANDARD GRIP



JUMBO GRIP



17" GRIP



| MODEL | BB-1 | BB-8W | BB-28 | BB-28 ARMLOCK | BB-49 | BB 6.0 | BB 7.0 |
|-------------------|------------|------------|-------------|------------------------------|------------|---------------------------------|-------------|
| NECK | PLUMBER'S | PLUMBER'S | SPUD | SPUD | SLANT | SPUD | SPUD |
| DEXTERITY | RH | RH, LH | | | RH | | |
| LENGTHS AVAILABLE | | 33" - 38" | | 40" - 42" | | 33" - 38" | |
| FINISH | | | | SAVANNAH BLUE PVD | | | |
| LOFT | | 3° | | 5° | | 3° | |
| LIE | | | | 70° | | | |
| OFFSET | FULL SHAFT | FULL SHAFT | 3/4 SHAFT | 1 1/2 SHAFT | 3/4 SHAFT | 3/4 SHAFT | 3/4 SHAFT |
| FACE MILLING | | | | VDF (VARIABLE DEPTH FLYMILL) | | | |
| ALIGNMENT | | | FLANGE LINE | | | TOPLINE / DOUBLE FLANGE LINE | FLANGE LINE |
| MATERIAL | | | | 303 SS | | | |
| WEIGHT | | 355g | | 400g | 355g | 363g | |
| TOE HANG | 1/2 | | SLIGHT | 1/8 | 1/3 | SLIGHT | SLIGHT |
| HEADCOVER | | BLADE | | | WIDE BLADE | MALLET | |



BLADE
HEADCOVER



MALLET
HEADCOVER



WIDE BLADE
HEADCOVER



QUEEN B SERIES

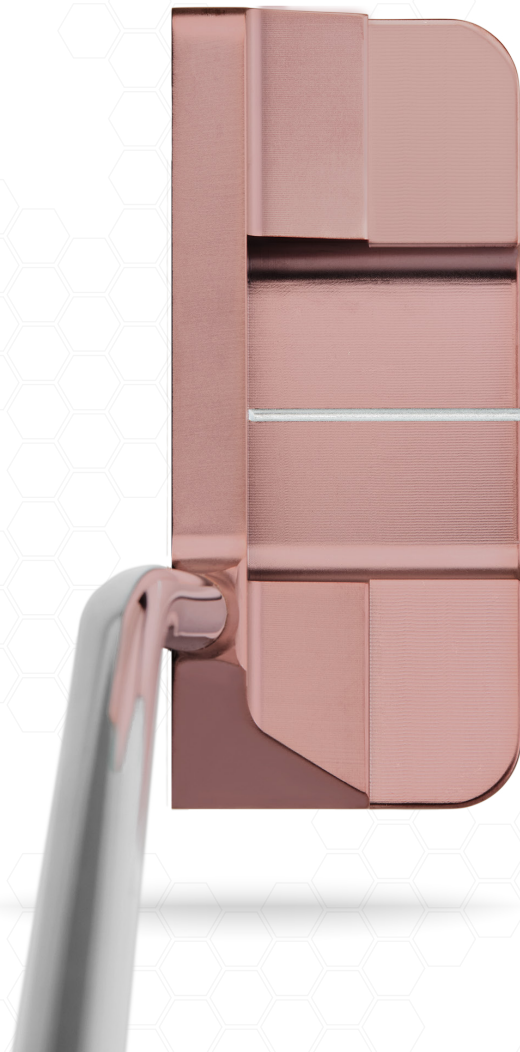
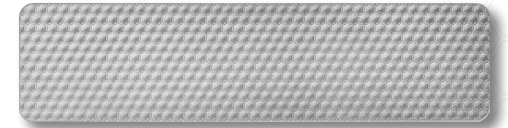
RULE THE GREEN

Since the Queen B Series' initial inception, its aesthetic charm, superior performance, and heavier head weights have won the loyalty of golfers around the globe. Now, our Queen B Series ascends to the throne, featuring improved Centers of Gravity, more naturally positioned sweet spots, and head shapes that maximize MOI and prioritize framing. The Mini Honeycomb™ face milling provides the player with supreme haptic feedback on every putt, and the head shapes and face milling are enhanced by our Royal Rose PVD, a hue that distinguishes the Queen B from any other putter on the green. Rule the Green with the Queen B Series.

QUEEN B SERIES

QB6

MINI HONEYCOMB™ FACE

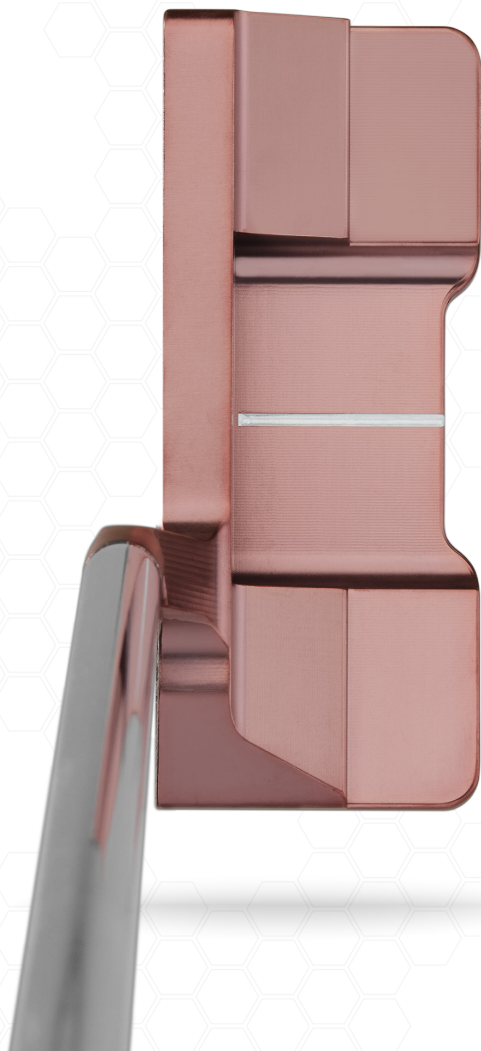
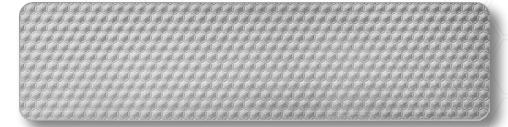


QUEEN B SERIES

QB6SBS

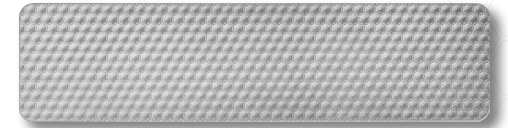
SLOTBACK SLANT

MINI HONEYCOMB™ FACE



QUEEN B SERIES
QB7

MINI HONEYCOMB™ FACE

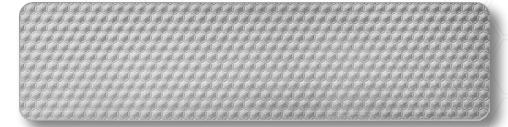


QUEEN B SERIES

QB8

MINI PLUMBER'S

MINI HONEYCOMB™ FACE

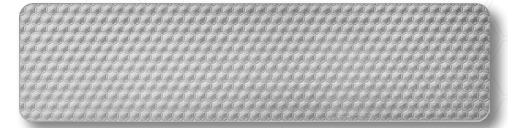


QUEEN B SERIES

QB8

CENTER

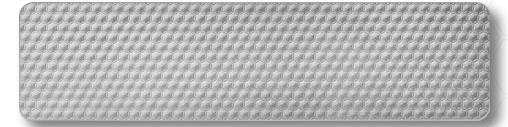
MINI HONEYCOMB™ FACE



QUEEN B SERIES

QB 16

MINI HONEYCOMB™ FACE



ENHANCED CENTER OF GRAVITY

Every putter in the Queen B lineup has been reimagined to align the Center of Gravity with the natural alignment of the putter. This weight distribution creates a sweet spot right at the center, where most golfers set up each putt. The result is more perfect putts and fewer mishits, enhancing both precision and confidence on the green.

MINI HONEYCOMB™ FACE MILLING

With the approval of both Tour Professionals and everyday golfers, the Queen B Series continues to feature Bettinardi's trademarked and most iconic face milling, Mini Honeycomb™. This design offers a firm and responsive feel on the ball, providing the most feedback of all the Bettinardi face milling options.

BEAUTY WITH FUNCTION

True to the essence of the Queen B Series, these putters boast a 303 Stainless Steel head finished in a stunning Royal Rose PVD. This majestic color, combined with the intricate sole engraving, provides an aesthetic charm that distinguishes this putter from all others.

PREMIUM COMPONENTS

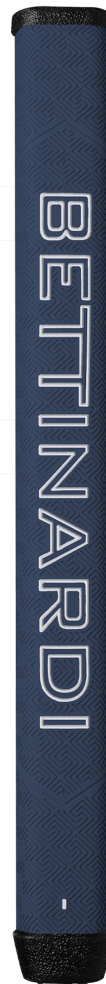
Each putter in the Queen B Series is paired with a Chrome Tour Grade shaft, a custom deep ocean blue Lamkin grip, and a matching silver base magnetic headcover featuring a deep ocean blue appliqué.



STANDARD GRIP



JUMBO GRIP



| MODEL | QB6 | QB6 SBS | QB7 | QB8 | QB8 | QB16 |
|-------------------|---------------------|-----------|------------|----------------|--------|------------|
| NECK | SPUD | SLANT | CRESCENT | MINI PLUMBER'S | CENTER | PLUMBER'S |
| DEXTERITY | RH,LH | RH | RH | RH | RH | RH |
| LENGTHS AVAILABLE | 33" - 38" | | | | | |
| FINISH | ROYAL ROSE PVD | | | | | |
| LOFT (DEG) | 3° | | | | | |
| LIE (DEG) | 70° | | | | | |
| OFFSET | 3/4 SHAFT | 3/4 SHAFT | HALF SHAFT | FULL SHAFT | NONE | FULL SHAFT |
| FACE MILLING | MINI HONEYCOMB™ | | | | | |
| ALIGNMENT | FLANGE LINE | | | | | |
| MATERIAL | 303 STAINLESS STEEL | | | | | |
| WEIGHT | 362g | | | | | |
| TOE HANG | 1/8 | 1/3 | 1/3 | 1/4 | 0 | 1/2 |
| HEADCOVER | BLADE | BLADE | BLADE | BLADE | BLADE | BLADE |



FACE MILLING

FEEL

SOFT

MEDIUM

FIRM

F.I.T. FACE™ FEEL IMPACT TECHNOLOGY

- Made for players with aggressive putting style
- Symmetrical groove design
- Exclusive to Antidote Series

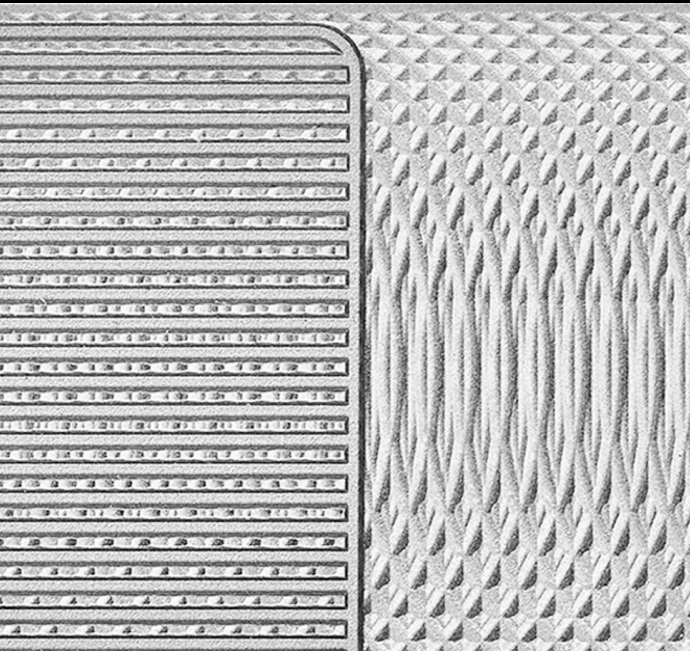
VDF VARIABLE DEPTH FLYMILL

- Nine precision milled zones optimize energy transfer for consistent ball speed and spin across the entire face, even on mishits
- Best distance control regardless of impact location
- Exclusive to BB Series

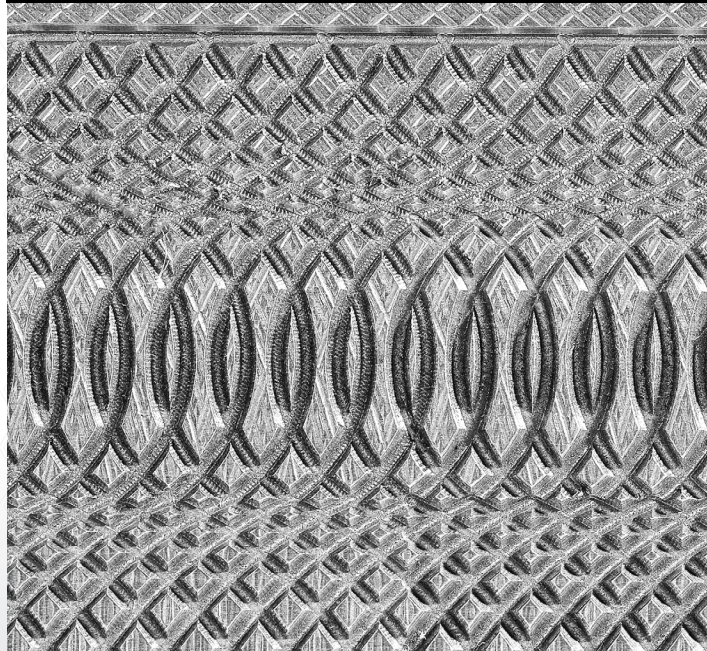
MINI HONEYCOMB™

- Utilizes an 8% smaller machine tool in order to provide the softest Honeycomb™ face to date
- Classic Bettinardi appearance
- Exclusive to Queen B Series

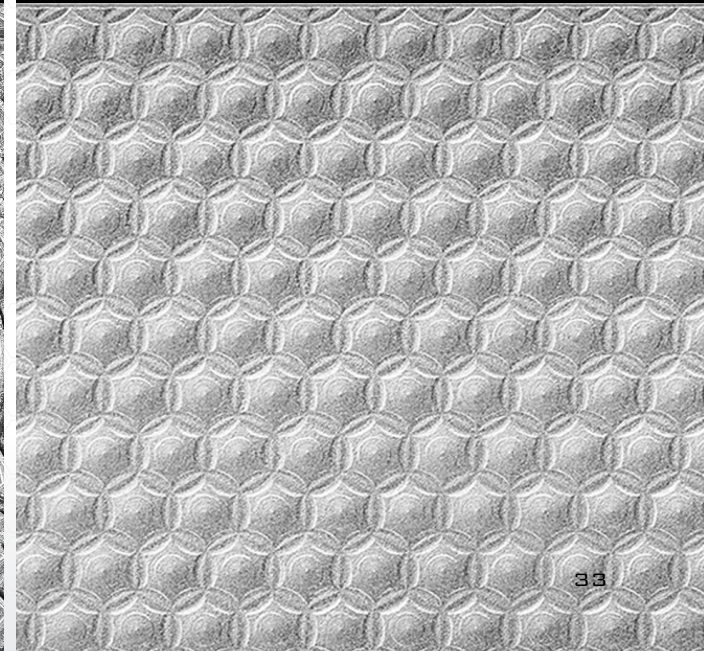
F.I.T. FACE™
FEEL IMPACT TECHNOLOGY



(VDF)
VARIABLE DEPTH FLYMILL



MINI
HONEYCOMB™



TOEHANG






BB SERIES

| TOEHANG | 1/2 | 1/2 | 1/3 | 1/8 | SLIGHT | SLIGHT | SLIGHT |
|---------|-----------------------------------------------------------------------------------|-----------------------------------------------------------------------------------|-----------------------------------------------------------------------------------|------------------------------------------------------------------------------------|-------------------------------------------------------------------------------------|-------------------------------------------------------------------------------------|-------------------------------------------------------------------------------------|
| |  |  |  |  |  |  |  |
| | BB-1 | BB-8W | BB-49 | BB-28 ARMLOCK | BB-28 | BB 6.0 | BB 7.0 |

ANTIDOTE SERIES

| TOEHANG | -90° | -90° | -90° | -90° | -90° | -90° | -90° |
|---------|-----------------------------------------------------------------------------------|-----------------------------------------------------------------------------------|-----------------------------------------------------------------------------------|------------------------------------------------------------------------------------|-------------------------------------------------------------------------------------|-------------------------------------------------------------------------------------|-------------------------------------------------------------------------------------|
| |  |  |  |  |  |  |  |
| | SB1 | SB1 COUNTERBALANCE | SB2 | SB2 COUNTERBALANCE | SB2 LONG | SB3 | SB5 |

QUEEN B SERIES

| TOEHANG | 1/2 | 1/3 | 1/3 | 1/4 | 1/8 | 0 |
|---------|-------------------------------------------------------------------------------------|-------------------------------------------------------------------------------------|-------------------------------------------------------------------------------------|--------------------------------------------------------------------------------------|---------------------------------------------------------------------------------------|---------------------------------------------------------------------------------------|
| |  |  |  |  |  |  |
| | QB16 | QB6SBS SLOTBACK SLANT | QB7 | QB8 MINI PLUMBER'S | QB6 | QB8 CENTER |



WEDGES

PURSUIT OF PRECISION

The all-new Bettinardi HLX 6.0 Forged Wedges, a masterclass in performance and versatility. Engineered for superior turf interaction, these wedges maximize spin and reduce launch, ensuring unparalleled control and precision. Elevate your short game to unprecedented heights in all conditions with the meticulously crafted HLX 6.0 Forged Wedges.

HLX 6.0 WEDGES

CHROME



HLX 6.0 WEDGES

GRAPHITE



| FINISH LOFT/GRIND DEXTERITY STANDARD LENGTHS LOFT ADJUSTMENT (DEG) LIE (DEG) BOUNCE (DEG) FLANGE MILLING BACK SOLE MILLING MATERIAL WEIGHT | HLX 6.0 | | | | | | | | | | |
|------------------------------------------------------------------------------------------------------------------------------------------------------------------------------------------------------------------|-----------------------|---------|-------|--------|---------|--------|---------|--------|---------|-------|---------|
| | CHROME / GRAPHITE PVD | | | | | | | | | | |
| | 48/8C | 50/8C | 52/8C | 54/10C | 54/16RJ | 56/12C | 56/16RJ | 58/10C | 58/14RJ | 60/8C | 60/12RJ |
| | RH | RH / LH | | | | | | | | | |
| | 35.75° | 35.5° | | 35.25° | | | | 35° | | | |
| | -1, -2, STD, +1, +2 | | | | | | | | | | |
| | 64° | | | | | | | | | | |
| | 8° | | 10° | | 16° | 12° | 16° | 10° | 14° | 8° | 12° |
| | HONEYCOMB | | | | | | | | | | |
| | FLYMILL | | | | | | | | | | |
| | SOFT CARBON STEEL | | | | | | | | | | |
| | 292g | 299g | | 302g | | | | 305g | | | |

FEATURES AND BENEFITS

FORGED FROM 1020 CARBON STEEL

Adds a premium, soft, and responsive feel back to the player.

LOWER LAUNCH, ADDED SPIN

Raised Center of Gravity (CoG) (CoG) for lower launch. Tighter spacing of HLX grooves for added spin.

SUPERIOR TURF INTERACTION

Re-engineered leading edge for consistent ball striking. Refined RJ grind with additional heel and toe relief for added versatility greenside.

GRIND OPTIONS

C-GRIND

The C-Grind sole features a classic design ideal for golfers who favor straightforward, square-faced shots. It helps players achieve a clean strike by reducing bounce on tighter lies, allowing for better control and precision throughout contact.



SWING TYPE:

Shallow/Sweeper, Neutral, Full Swing

RJ-GRIND

The RJ Grind offers a versatile, high-bounce sole designed for golfers who want to excel with a variety of shots around the green. Its enhanced heel, toe, and trailing edge relief make it the most adaptable grind in the lineup, providing exceptional playability for a wide range of conditions and shot types.



SWING TYPE:

Shallow/Sweeper, Neutral, Steep/Digger

AVAILABLE SHAFTS



HIGH REV 2.0



DYNAMIC GOLD S200 & S400



NIPPON SHAFT
PRO MODUS 115



GOLF PRIDE TOUR VELVET



IRONS

FORGE YOUR LEGACY

Unwavering in our commitment to innovation and craftsmanship, our first-generation irons are the result of over 30 years of experience in machining metal and a quarter-century of dedication to the game of golf. Employing our signature One Piece Forging Technology, our seamlessly co-forged irons utilize a tri-material construction to individually optimize COG across the set, offering maximum forgiveness, tight dispersion, and consistent gapping. Years of research and planning, and hours upon hours of collaboration with Tour players, went into crafting these impeccable irons. Forge your Legacy with the all-MB24 and CB24 irons.

IRONS

CB24

CHROME



IRONS

CB24

BLACK RAINBOW PVD



IRONS

CB24

OIL RUBBED BRONZE PVD



IRONS

MB24

CHROME



IRONS

MB24

BLACK RAINBOW PVD



IRONS

MB24

OIL RUBBED BRONZE PVD



GRIP OPTIONS

GOLF PRIDE

| MODEL | COLOR | SIZE | WEIGHT (G) | CORE I.D. |
|------------------------------------|-------------|----------|------------|-----------|
| TOUR VELVET - (BETTINARDI) (STOCK) | BLACK/WHITE | STANDARD | 49.5 | 0.600" |
| TOUR VELVET | BLACK/WHITE | MIDSIZE | 53 | 0.600" |
| MCC | WHITE/BLACK | STANDARD | 46.5 | 0.600" |
| MCC | BLACK/WHITE | MIDSIZE | 59 | 0.600" |
| MCC PLUS4 | GRAY | STANDARD | 52 | 0.600" |
| MCC CP2 PRO | BLACK/RED | STANDARD | 51.5 | 0.600" |
| TOUR WRAP | WHITE | STANDARD | 55 | 0.600" |

LAMKIN

| MODEL | COLOR | SIZE | WEIGHT (G) | CORE I.D. |
|-----------------------------------|--------------------|----------|------------|-----------|
| CROSSLINE 360 (BETTINARDI) | BLACK/GRAY | STANDARD | 50 | 0.600" |
| CROSSLINE 360 (BETTINARDI) | BLACK/GRAY | MIDSIZE | 59 | 0.600" |
| CROSSLINE 360 - CORD (BETTINARDI) | CHICAGO R/W/B | STANDARD | 50 | 0.600" |
| CROSSLINE 360 - CORD (BETTINARDI) | GRAY/CHICAGO BLUE | STANDARD | 50 | 0.600" |
| CROSSLINE 360 - CORD (BETTINARDI) | BLACK/GRAY | STANDARD | 50 | 0.600" |
| CROSSLINE 360 - CORD (BETTINARDI) | PURPLE /LIME GREEN | STANDARD | 50 | 0.600" |
| CROSSLINE 360 - CORD (BETTINARDI) | GREEN/BLACK | STANDARD | 50 | 0.600" |
| CROSSLINE 360 - CORD (BETTINARDI) | WHITE/GRAY | STANDARD | 50 | 0.600" |
| CROSSLINE 360 - CORD (BETTINARDI) | ORANGE/BLUE | STANDARD | 50 | 0.600" |
| SONAR+ BLACK | BLACK/WHITE | STANDARD | 53 | 0.600" |
| UTX GRAY | GRAY/BLACK | STANDARD | 52 | 0.580" |
| ST+2 HYBRID 360 | BLACK/GRAY | STANDARD | 53 | 0.600" |

SHAFT OPTIONS

KBS

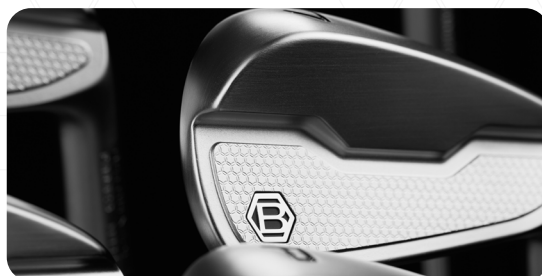
| MODEL | FLEX | WEIGHT (G) | TIP O.D. | BUTT O.D. | FINISH | LAUNCH | SPIN | LENGTH |
|--------------|------|------------|----------|-----------|--------|----------|----------|-------------|
| TOUR (STOCK) | R | 110 | 0.355" | 0.600" | CHROME | MID | MID | 37.5" - 41" |
| TOUR (STOCK) | S | 120 | 0.355" | 0.600" | CHROME | MID | MID | 37.5" - 41" |
| TOUR (STOCK) | X | 130 | 0.355" | 0.600" | CHROME | MID | MID | 37.5" - 41" |
| C TAPER LITE | R | 105 | 0.355" | 0.600" | SATIN | MID-HIGH | MID-HIGH | 37.5" - 41" |
| C TAPER LITE | S | 110 | 0.355" | 0.600" | SATIN | MID-HIGH | MID-HIGH | 37.5" - 41" |
| C TAPER LITE | X | 115 | 0.355" | 0.600" | SATIN | MID-HIGH | MID-HIGH | 37.5" - 41" |

TRUE TEMPER

| MODEL | FLEX | WEIGHT (G) | TIP O.D. | BUTT O.D. | FINISH | LAUNCH | SPIN | LENGTH |
|------------------------------|------|------------|----------|-----------|--------|----------|----------|-------------|
| DYNAMIC GOLD MID 100 (STOCK) | R300 | 105 | 0.355" | 0.600" | CHROME | MID-HIGH | MID-HIGH | 37" - 40" |
| DYNAMIC GOLD MID 100 (STOCK) | S300 | 110 | 0.355" | 0.600" | CHROME | MID-HIGH | MID-HIGH | 37" - 40" |
| DYNAMIC GOLD TOUR ISSUE | S400 | 132 | 0.355" | 0.600" | CHROME | LOW | LOW | 37" - 40" |
| DYNAMIC GOLD TOUR ISSUE | X100 | 130 | 0.355" | 0.600" | CHROME | LOW | LOW | 37" - 40" |
| PROJECT X LZ | 5.5 | 115 | 0.355" | 0.600" | CHROME | MID | MID | 36.5" - 40" |
| PROJECT X LZ | 6.0 | 120 | 0.355" | 0.600" | CHROME | MID | MID | 36.5" - 40" |
| PROJECT X LZ | 6.5 | 125 | 0.355" | 0.600" | CHROME | MID | MID | 36.5" - 40" |
| STEELFIBER I70CW | SR | 70 | 0.355" | 0.600" | GRAY | MID | MID | 36.5" - 40" |
| STEELFIBER I95CW | R | 95 | 0.355" | 0.600" | GRAY | MID | MID | 36.5" - 40" |
| STEELFIBER I95CW | S | 95 | 0.355" | 0.600" | GRAY | MID | MID | 36.5" - 40" |
| STEELFIBER I110CW | S | 110 | 0.355" | 0.605" | GRAY | MID | MID | 36.5" - 40" |

NIPPON

| MODEL | FLEX | WEIGHT (G) | TIP O.D. | BUTT O.D. | FINISH | LAUNCH | SPIN | LENGTH |
|-------------------------|------|------------|----------|-----------|--------|----------|------|-----------|
| NS PRO MODUS 3 TOUR 105 | R | 103 | 0.355" | 0.600" | CHROME | MID-HIGH | MID | 37" - 41" |
| NS PRO MODUS 3 TOUR 105 | S | 106.5 | 0.355" | 0.600" | CHROME | MID-HIGH | MID | 37" - 41" |
| NS PRO MODUS 3 TOUR 105 | X | 112 | 0.355" | 0.600" | CHROME | MID-HIGH | MID | 37" - 41" |
| NS PRO MODUS 3 TOUR 120 | S | 114 | 0.355" | 0.600" | CHROME | LOW-MID | MID | 37" - 41" |
| NS PRO MODUS 3 TOUR 120 | X | 120 | 0.355" | 0.600" | CHROME | LOW-MID | MID | 37" - 41" |
| NS PRO MODUS 3 TOUR 130 | S | 124 | 0.355" | 0.600" | CHROME | MID-HIGH | MID | 37" - 41" |
| NS PRO MODUS 3 TOUR 130 | X | 129 | 0.355" | 0.600" | CHROME | MID-HIGH | MID | 37" - 41" |



| HEAD DEXTERITY LENGTH LOFT LIE OFFSET TOPLINE HOSEL OD HOSEL DIAMETER FINISH MATERIAL WEIGHT | CB24 | | | | | | | MB24 | | | | | | |
|---------------------------------------------------------------------------------------------------------------------------------------------------------------------------|-------------------------------------------|--------|--------|-------|--------|--------|--------|--------------------------------|--------|--------|--------|--------|--------|--------|
| | 4 | 5 | 6 | 7 | 8 | 9 | PW | 4 | 5 | 6 | 7 | 8 | 9 | PW |
| | RH/LH | | | | | | | RH | | | | | | |
| | 38.5° | 38° | 37.5° | 37° | 36.5° | 36° | 35.75° | 38.5° | 38° | 37.5° | 37° | 36.5° | 36° | 35.75° |
| | 23° | 26° | 29° | 33° | 37° | 41° | 45° | 23° | 26° | 29° | 33° | 37° | 41° | 45° |
| | 61° | 61.5° | 62° | 62.5° | 63° | 63.5° | 64° | 61° | 61.5° | 62° | 62.5° | 63° | 63.5° | 64° |
| | 0.134" | 0.126" | 0.118" | 0.11" | 0.098" | 0.087" | 0.075" | 0.094" | 0.087" | 0.079" | 0.071" | 0.063" | 0.055" | 0.047" |
| | 0.245" | | | | | | | 0.205" | | | | | | |
| | 0.54" | | | | | | | 0.54" | | | | | | |
| | 0.355" | | | | | | | 0.355" | | | | | | |
| | PEARL CHROME W/ HIGH POLISH MUSCLE RADIUS | | | | | | | PEARL CHROME | | | | | | |
| | 1025 CARBON STEEL/TUNGSTEN/CMC | | | | | | | 1025 CARBON STEEL/TUNGSTEN/CMC | | | | | | |
| | 250g | 257g | 264g | 271g | 278g | 285g | 293g | 250g | 257g | 264g | 271g | 278g | 285g | 293g |

*COMBO SETS AVAILABLE (CB 4-6 MB 7-PW)

CB24

Created for ultimate playability, the CB24 irons combine modern engineering with classic design. Crafted for those who demand both accuracy and distance, these irons seamlessly blend a traditional forged feel with innovative technology. Characterized by an optimal progressive cavity and perimeter weighting for maximum MOI, the CB24 irons strike a perfect balance of distance and forgiveness.

ONE PIECE CO-FORGED SOLID BODY

Engineered to seamlessly co-forged the interior components within the 1025 Carbon Steel chassis, our One Piece Forging Technology delivers a solid body iron with exceptional feel that gives the player responsive feedback.

TRI-MATERIAL CONSTRUCTION

The integration of high-density Tungsten and Military-Grade CMC (Ceramic Matrix Composite) within the forged Carbon Steel body produces weight profiles that maximize forgiveness while maintaining balance and consistency from one iron to the next.

PROGRESSIVE COG POSITIONING

Loft-dependent positioning of the Tungsten and CMC components ensures precise COG placement in each iron. This progressive COG shift generates more launch in the long irons, controlled backspin in the scoring irons, and tighter dispersion while maintaining consistent gapping through the set.

SHAPED TO PERFORM

A modern head shape with a clean aesthetic inspires confidence at address. The optimized design promotes maximum forgiveness and a higher launch trajectory, resulting in enhanced distance on every shot.

MB24

Sculpted for uncompromising control, the MB24 irons blend Tour-proven aesthetics with an exquisite forged feel. Crafted for those who demand precision, these irons empower players to shape every shot with confidence. Characterized by a thinner topline and a differential muscleback designed for precise weighting, the MB24 irons maximize control with added forgiveness in a player's profile.

ONE PIECE CO-FORGED SOLID BODY

Engineered to seamlessly co-forged the interior components within the 1025 Carbon Steel chassis, our One Piece Forging Technology delivers a solid body iron with exceptional feel that gives the player responsive feedback.

TRI-MATERIAL CONSTRUCTION

The integration of high-density Tungsten and Military-Grade CMC (Ceramic Matrix Composite) within the forged Carbon Steel body produces weight profiles that maximize forgiveness while maintaining balance and consistency from one iron to the next.

PROGRESSIVE COG POSITIONING

Loft-dependent positioning of the Tungsten and CMC components ensures precise COG placement in each iron. This progressive COG shift generates more launch in the long irons, controlled backspin in the scoring irons, and tighter dispersion while maintaining consistent gapping through the set.

SHAPED TO PERFORM

A Tour-inspired head shape with a modest aesthetic inspires confidence at address on every shot. The sole of each club is shaped to optimize bounce, ensuring prime turf interaction for effective energy transfer from club to ball.



7650 GRAPHICS DRIVE, TINLEY PARK, IL, 60477 | 708-802-7400
WWW.BETTINARDI.COM | SALESSUPPORT@BETTINARDI.COM